



TITLE: IRON CORE LINE REACTOR  
NAMEPLATE INFORMATION

NO.	DATE	BY	REVISION	DES: PBAKER
				DATE: 14/07/31
				SCALE: NTS

SHEET 1 OF 2

EDBCRX0124BE

**hammond**  
POWER SOLUTIONS

HPS CENTURION R  
3PH DRY TYPE  
REACTOR

P/N CRX0124BE

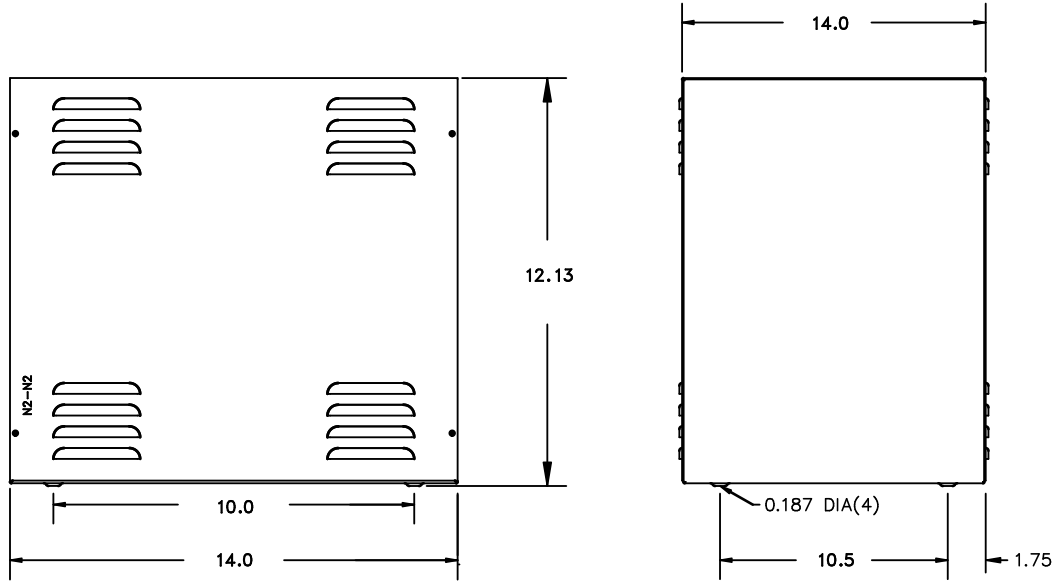
INDUCT. 0.295 MH 50/60 HZ 124 AMPS

0.6 KV CLASS WT: 58 lbs ENCL. TYPE 1/IP20

AMBIENT: 50° TEMP CLASS: 220 TYPE JR-2A

USE WITH SUITABLY RATED LISTED (ZMWV) LUGS  
WINDING TERMINAL TEMPERATURE: 75° C

MADE IN CANADA  
f003783e

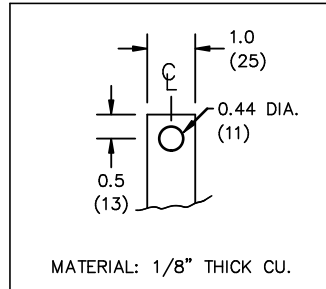
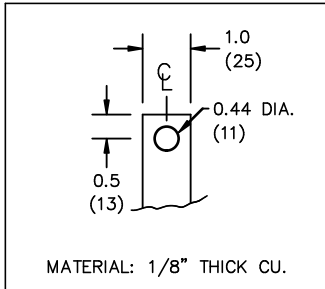


All Dimensions in inches

ENCLOSURE COLOR :ASA 61 GREY

IN TERMINAL DETAIL

OUT TERMINAL DETAIL



CUSTOMER NOTES:

- IN TERMINATED AT BOTTOM FRONT
- OUT TERMINATED AT TOP FRONT



TITLE: IRON CORE LINE REACTOR

				DES: PBAKER
				DATE: 14/07/31
NO.	DATE	BY	REVISION	SCALE: NTS

SHEET 2 OF 2

EDBCRX0124BE