



TITLE: IRON CORE LINE REACTOR
NAMEPLATE INFORMATION

NO.	DATE	BY	REVISION	DES:	DATE:	SCALE:
				ASETH	14/07/25	NTS

SHEET 1 OF 2

EDBCRX0114AE

0.2 httpd 2026/06/25 00:11



HPS CENTURION R
3PH DRY TYPE
REACTOR

P/N CRX0114AE

INDUCT. 0.09 MH 50/60 HZ 114 AMPS

0.6 KV CLASS WT: 28 lbs ENCL. TYPE 1/IP20

AMBIENT: 50° TEMP CLASS: 180 TYPE JR-2A

USE WITH SUITABLY RATED LISTED (ZMWV) LUGS
WINDING TERMINAL TEMPERATURE: 75° C



LR3902



IND. CONT. EQ. E61431 LISTED

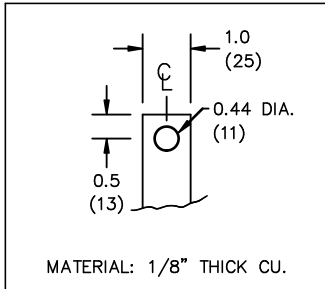
MADE IN CANADA
f003783e



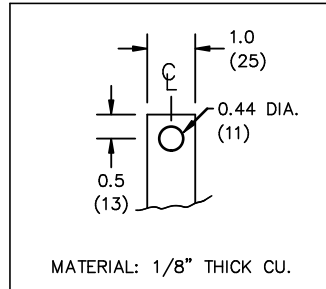
All Dimensions in inches

ENCLOSURE COLOR :ASA 61 GREY

IN TERMINAL DETAIL



OUT TERMINAL DETAIL



CUSTOMER NOTES:

- IN TERMINATED AT BOTTOM FRONT
- OUT TERMINATED AT TOP FRONT



TITLE: IRON CORE LINE REACTOR

DES:	ASETH
DATE:	14/07/25
SCALE:	NTS

NO.	DATE	BY	REVISION

SHEET 2 OF 2

EDBCRX0114AE

0.2 httpd 2026/06/25 00:11

THIS DRAWING CONTAINS STRICTLY CONFIDENTIAL INFORMATION BELONGING TO HAMMOND POWER SOLUTIONS AND MUST NOT BE DISTRIBUTED OUTSIDE AUTHORIZED PARTIES.