



TITLE: IRON CORE LINE REACTOR NAMEPLATE INFORMATION			
DES:	ASETH		
DATE:	14/07/25		
SCALE:	NTS		
NO.	DATE	BY	REVISION

SHEET 1 OF 2

EDBCRX0096BE

**hammond**  
POWER SOLUTIONS

HPS CENTURION R  
3PH DRY TYPE  
REACTOR

P/N CRX0096BE

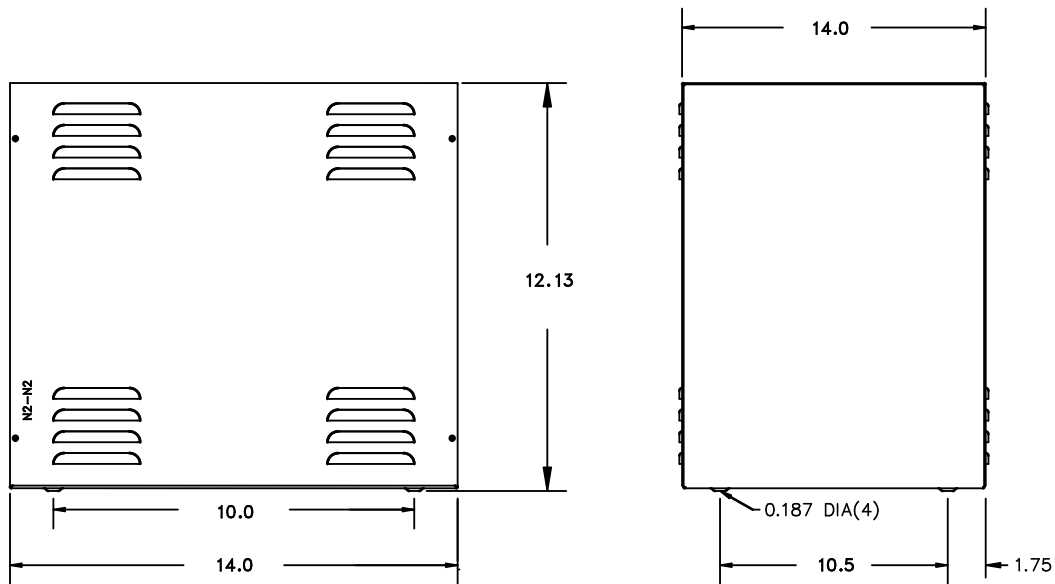
INDUCT. 0.39 MH 50/60 HZ 96 AMPS

0.6 KV CLASS WT: 59 lbs ENCL. TYPE 1/IP20

AMBIENT: 50° TEMP CLASS: 220 TYPE JR-2A

USE WITH SUITABLY RATED LISTED (ZMWV) LUGS  
WINDING TERMINAL TEMPERATURE: 75° C

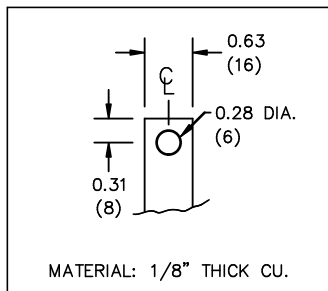
MADE IN CANADA  
f003783e



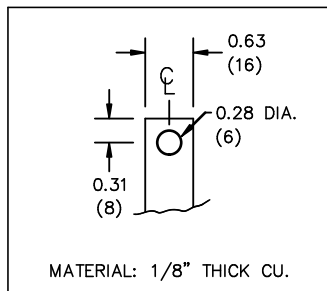
All Dimensions in inches

ENCLOSURE COLOR :ASA 61 GREY

IN TERMINAL DETAIL



OUT TERMINAL DETAIL



CUSTOMER NOTES:

- IN TERMINATED AT BOTTOM FRONT
- OUT TERMINATED AT TOP FRONT



TITLE: IRON CORE LINE REACTOR

				DES: ASETH
				DATE: 14/07/25
NO.	DATE	BY	REVISION	SCALE: NTS

SHEET 2 OF 2

EDBCRX0096BE