



TITLE: IRON CORE LINE REACTOR
NAMEPLATE INFORMATION

NO.	DATE	BY	REVISION	DES:	SCALE:
				ASETH	NTS

DES: ASETH
DATE: 14/07/22
SCALE: NTS

SHEET 1 OF 2

EDBCRX0077BE

hammond
POWER SOLUTIONS

HPS CENTURION R
3PH DRY TYPE
REACTOR

P/N CRX0077BE

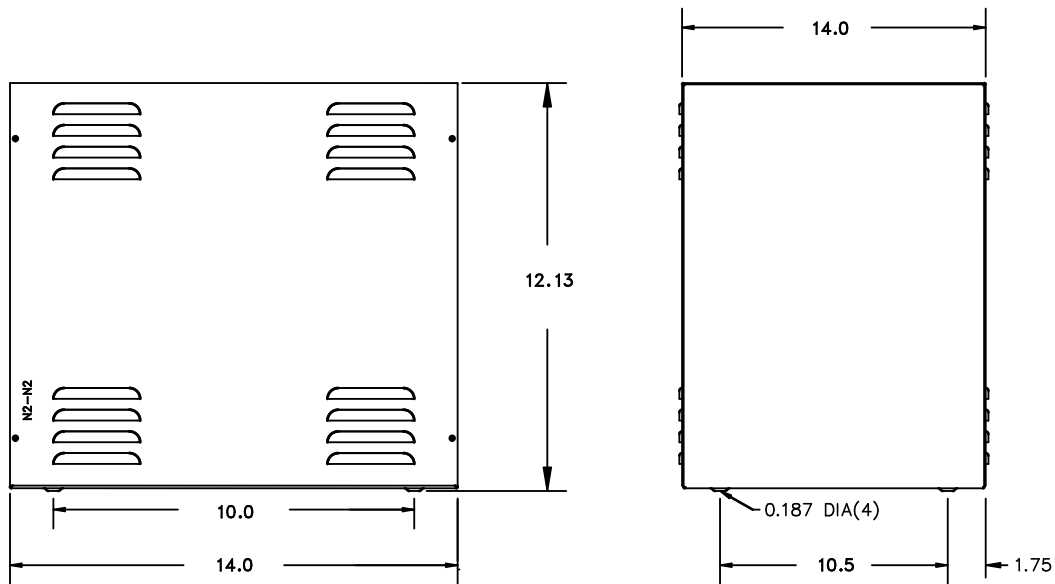
INDUCT. 0.36 MH 50/60 HZ 77 AMPS

0.6 KV CLASS WT: 35 lbs ENCL. TYPE 1/IP20

AMBIENT: 50° TEMP CLASS: 180 TYPE JR-2A

USE WITH SUITABLY RATED LISTED (ZMWV) LUGS
WINDING TERMINAL TEMPERATURE: 75° C

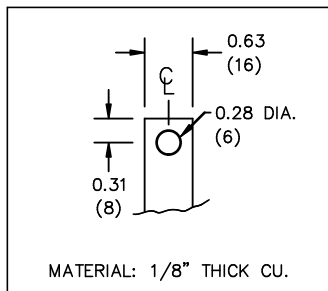
MADE IN CANADA
f003783e



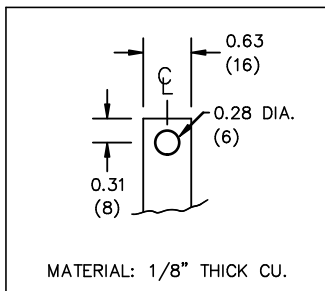
All Dimensions in inches

ENCLOSURE COLOR :ASA 61 GREY

IN TERMINAL DETAIL



OUT TERMINAL DETAIL



CUSTOMER NOTES:

- IN TERMINATED AT BOTTOM FRONT
- OUT TERMINATED AT TOP FRONT



TITLE: IRON CORE LINE REACTOR

				DES: ASETH
				DATE: 14/07/22
NO.	DATE	BY	REVISION	SCALE: NTS

SHEET 2 OF 2

EDBCRX0077BE