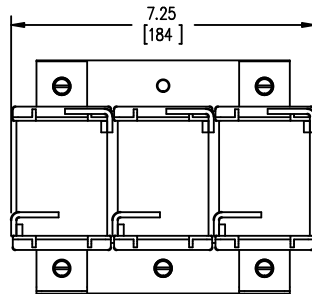
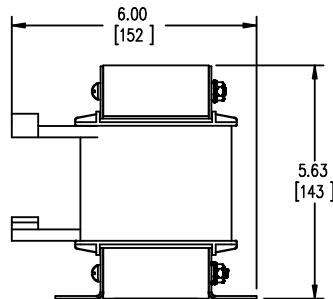


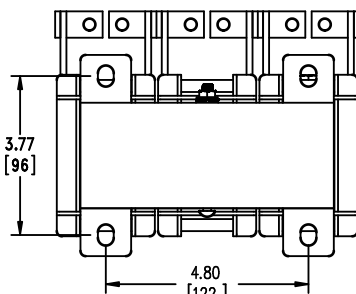
TOP VIEW



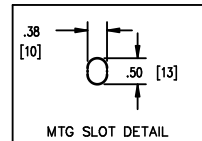
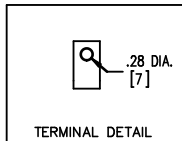
FRONT VIEW



SIDE VIEW



BOTTOM VIEW



TOLERANCES
MOUNTING CENTERS = +/- .06"
MOUNTING HOLE SIZE = +/- .005"

THIS DRAWING CONTAINS PROPRIETARY INFORMATION
BELONGING TO HAMMOND POWER SOLUTIONS INC.,
AND IS NOT FOR GENERAL DISTRIBUTION

All Dimensions in Inches
mm in Parenthesis

REACTOR

hammond
POWER SOLUTIONS

HPS CENTURION R
3PH DRY TYPE
REACTOR

MADE IN CANADA

P/N CRX0077BC

INDUCT. 0.357 mH Hz 50/60 AMPS 77 IP00

0.6 kV CLASS TEMP CLASS 180°C TYPE JR-2

WEIGHT 24 (LBS/KG) AMBIENT: 50°C

USE WITH SUITABLY RATED LISTED (ZMVV) LUGS

WINDING TERMINAL TEMPERATURE: 75° C



LR3902



1003776oe

NOTES:

hammond
POWER SOLUTIONS

TITLE: IRON CORE LINE REACTOR

| | |
|--------|----------|
| DES: | PBAKER |
| DATE: | 14/06/25 |
| SCALE: | NTS |

| NO. | DATE | BY | REVISION |
|-----|------|----|----------|
| | | | |

SHEET 1 OF 1

EDBCRX0077BC