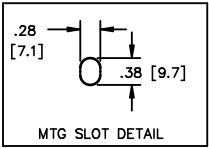


TERMINAL BLOCK  
SUITABLE FOR  
#14 TO #4 AWG  
CONDUCTORS  
QTY. 1 PER PHASE



	<p>TOLERANCES MOUNTING CENTERS = +/- .06" MOUNTING HOLE SIZE = +/- .005"</p>	<p>THIS DRAWING CONTAINS PROPRIETARY INFORMATION BELONGING TO HAMMOND POWER SOLUTIONS INC., AND IS NOT FOR GENERAL DISTRIBUTION</p>	<p>All Dimensions in Inches mm in Parenthesis</p>	<p>REACTOR</p>
--	--	---	---	----------------

**hammond** HPS CENTURION R  
POWER SOLUTIONS 3PH DRY TYPE  
REACTOR  
CRX0031AC  
0.32 MH 50/60 HZ 31 AMPS  
0.6 KV CLASS TEMP CLASS: 130 TYPE JR-1  
AMBIENT: 50°C

NOTES:

	<p>TITLE: 3 PHASE LINE REACTOR</p> <table border="1"> <tr> <td>DES:</td> <td>PBAKER</td> </tr> <tr> <td>DATE:</td> <td>14/06/25</td> </tr> <tr> <td>SCALE:</td> <td>NTS</td> </tr> </table>	DES:	PBAKER	DATE:	14/06/25	SCALE:	NTS	<p>SHEET 1 OF 1 EDBCRX0031AC</p>		
DES:	PBAKER									
DATE:	14/06/25									
SCALE:	NTS									
<table border="1"> <thead> <tr> <th>NO.</th> <th>DATE</th> <th>BY</th> <th>REVISION</th> </tr> </thead> <tbody> <tr> <td> </td> <td> </td> <td> </td> <td> </td> </tr> </tbody> </table>	NO.	DATE	BY	REVISION						
NO.	DATE	BY	REVISION							

THIS DRAWING CONTAINS STRICKLY CONFIDENTIAL INFORMATION BELONGING TO HAMMOND POWER SOLUTIONS AND MUST NOT BE DISTRIBUTED OUTSIDE AUTHORIZED PARTIES.

0.0 httpd 2026/05/18 06:55